

Optimal, Secure Connection for Your Network

25-user Office Wireless VPN Firewall

NETGEAR's SRXN3205 ProSafe® Wireless-N VPN Firewall offers two types of virtual private network (VPN) tunnels, Secure Sockets Layer (SSL) and IP security (IPsec), for optimal secure connection to your network. SSL VPN tunnels provide clientless remote access to your corporate data for individual access anywhere and anytime without a software client. IPsec VPN tunnels deliver both secure site-to-site tunnels and legacy remote access support, connecting multiple offices together, as well as client-based remote access. Backed by a sophisticated firewall, the SRXN3205 is a high-performance, SNMP-manageable security solution that furnishes multidimensional security including denial-of-service (DoS) protection, stateful packet inspection (SPI), URL keyword filtering, logging, reporting, and real-time alerts. Four Gigabit LAN ports in conjunction with an integrated dual band Wireless-N Access Point keep your data moving at top speed.

Secure

The SRXN3205 Wireless-N VPN Firewall takes care of all your security needs, with support of up to 5 SSL VPN tunnels and 5 IPsec VPN tunnels simultaneously, hacker protection via SPI firewall, DoS attack protection, and multiple VPN pass-through. SYSLOG and email reporting enable thorough network monitoring. The SSL VPN tunnels support industry-strength encryption algorithms and features such as automatic cache cleanup after session termination to ensure protection and privacy of your sensitive data. The SRXN3205 Wireless-N VPN Firewall provides optimal value and defense against network security threats.

Wireless Access

NETGEAR's SRXN3205 Wireless-N VPN Firewall delivers the coverage and speed advantages of 802.11n wireless networks. Designed to deliver the superior wireless network that your clients want, the SRXN3205 makes it easy to move up to 802.11n. Operating in either 2.4 GHz or 5.0 GHz radio bands, the SRXN3205 provides the flexibility to transition from legacy networks. Select the 2.4 GHz radio band to gain superior wireless connection while maintaining support for existing 802.11g and 802.11b networks. Wireless-N clients on this network will experience excellent throughput and range, while legacy clients will continue to function. For the full benefits of Wireless-N, select the 5.0 GHz radio band to create an overlay network that does not interfere with the on-hand 802.11g and 802.11b devices such as older laptops, print servers, hand-held inventory scanners, and IP cameras. Selected clients that are upgraded to this N network will achieve the full capabilities such as:

- Up to 10x the coverage and 15x the speed of 802.11g networks
- Operating in 5 GHz radio band to avoid interference with b or g network devices
- Wireless access security features including WPA, WPA2, and 802.1x with RADIUS support

Easy to Use

Auto Detect connects to your ISP quickly; the user-friendly Web-based ProSafe Control Center configuration screen and install assistant reduce setup time. With SSL VPN tunnels, users can quickly and securely access company data with just a Web browser. The IPsec VPN wizard automates IPsec VPN configuration and secure remote makes it simple to connect to multiple sites. Support for DHCP (client and server) as well as PPPoE allows for widespread deployment. The SRXN3205 is compatible with Windows®, UNIX®, Macintosh®, and Linux® OS.

"Simply put, those looking to combine wireless, a SPI firewall, SSL VPN and a multitude of other connectivity features need to look no further than the SRXN3205."

Frank Ohlhorst, eWeek Channel Insider

eWEEK.COM



1-888-NETGEAR (638-4327)
Email: info@NETGEAR.com



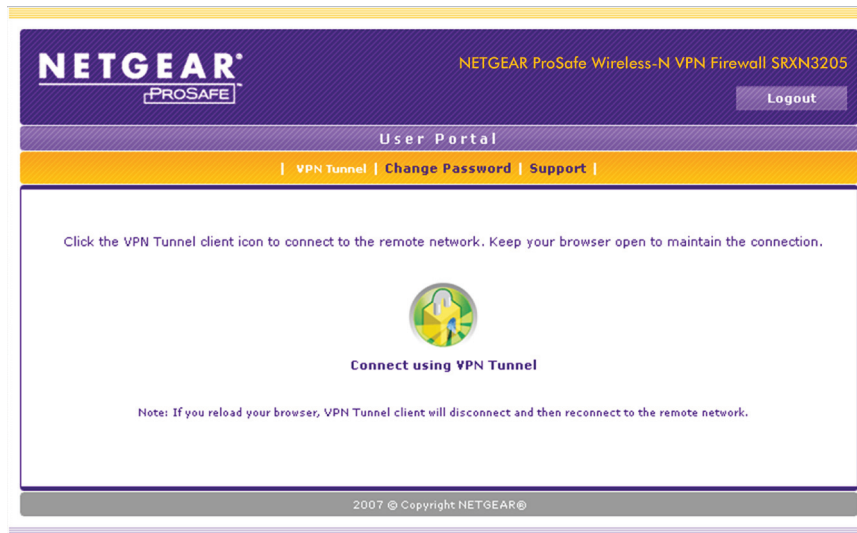
"The unit works fine and the wireless range is excellent. I would recommend and install it at customer sites. The SSL-VPN feature gives it an edge over the competition and offers an easy upgrade to clients who want to move up from using a standard ADSL connection to wireless with firewall and MultiNAT."

Mike Fodden, Raven Systems, United Kingdom

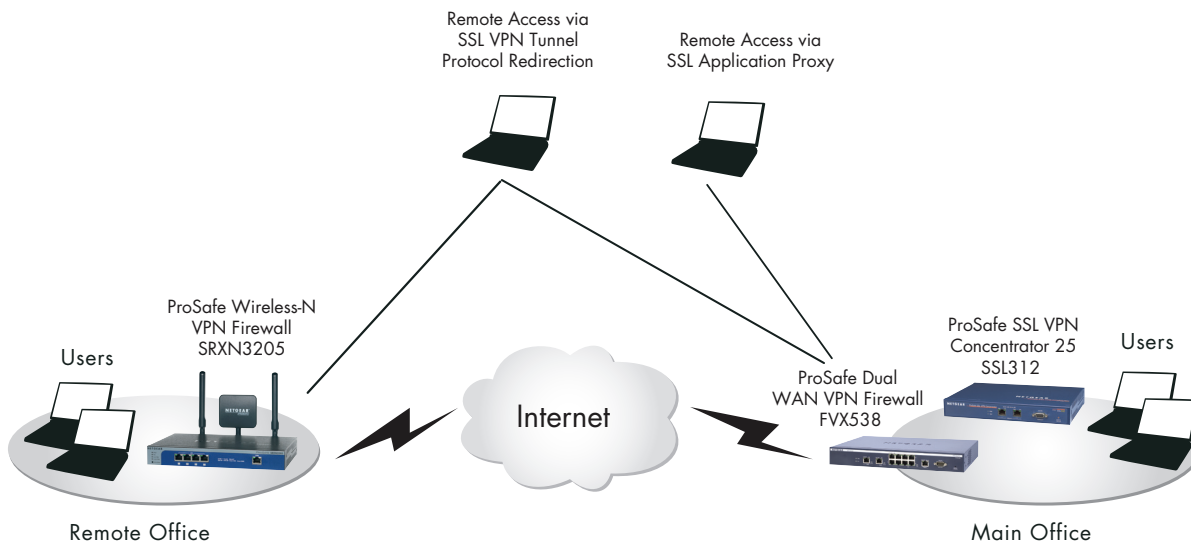
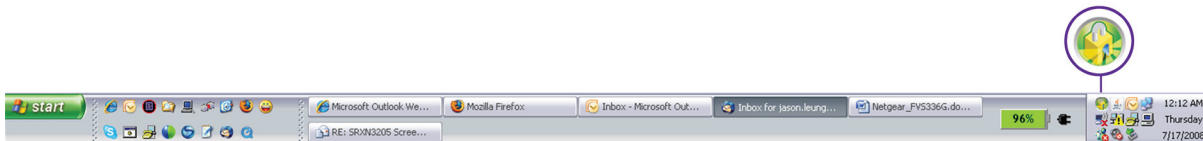
"I found the wireless range to be excellent, and got increased range over my previous firewall. The internet performance is especially good for streaming video (iPlayer etc) performance was absolutely flawless, even with other clients connected. Several of my customers will be replacing their current router with this device."

Andy Miller, Miller Systems, United Kingdom

Use a simple Web browser to build an SSL VPN tunnel - no separate client software needed!



SSL VPN tunnel built through a dissolvable browser-based client on the taskbar



Technical Specifications

• Client System Requirements

- 2.4 GHz 802.11n draft specifications or 2.4 GHz 802.11b/g wireless adapter
- Microsoft Windows Vista®, XP, 2000, 98, Me, Apple OSX, UNIX, Linux
- Internet Explorer 6.0, Mozilla Firefox® 1.5

• Wireless

- IEEE 802.11n draft 2.0 spec, 2.4 GHz and 5.0 GHz
- IEEE 802.11a 5.0 GHz
- IEEE 802.11g, IEEE 802.11b, 2.4 GHz
- Wi-Fi Protected Access™ (WPA, WPA2) with TKIP and AES
- Wired Equivalent Privacy (WEP) 64 bit, 128-bit encryptions for IEEE 802.11b and 802.11g
- IEEE 802.1x RADIUS authentication with EAP TLS, TTLS, PEAP
- 2 dipole antennas
- 1 patch antenna
- Three (3) reverse SMA antenna connectors

• SPI Firewall

- Stateful packet inspection
 - prevents DoS attacks
 - stealth mode
 - user support: unrestricted
- Keyword filtering on:
 - address
 - service (FTP, SMTP, HTTP, RPL, SNMP, DNS, ICMP, NNTP, POP3, SSH)
 - protocol
 - Web UTL port / service blocking
 - ActiveX, Java, Javascript
- Port/Service Blocking

• IPsec VPN Functionality

- 5 dedicated IPsec VPN tunnels
- Manual and Internet Key Exchange Security Association (IKE SA) assignment
 - preshared key signature
 - RSA/DSA signature
- Key life & IKE lifetimes time settings
- Perfect forward secrecy
- Diffie-Hellman groups 1 and 2
- Oakley Support
- Operating modes:
 - main
 - aggressive
- Fully qualified domain name (FQDN support) for dynamic IP address VPN connections

• IPsec Support

- DES (56 bit), 3DES(168 bit), AES (256 bit) encryption algorithm
- MD5 or SHA-1 hashing algorithm
- ESP support
- PKI features with x.509 v.3 certificate support
- remote access VPN (client-to-site), site-to-site VPN
- IPsec NAT traversal (VPN pass-through)

• SSL VPN Functionality

- 5 dedicated SSL VPN tunnels
- SSL version support: SSLv3 and TLS1.0
- SSL encryption support: DES, 3DES, ARC4, AES (ECB, CBC, XCBC, CNTR) 128/256 bit
- SSL message integrity: MD5, SHA-1, MAC-MDS/SHA-1, HMAC-MD5/SHA-1
- Certificate Support:
 - RSA
 - Diffie-Hellman
 - Self-signed

• Routing Modes of Operation

- Many-to-one Multi-network Address Translation (NAT)
- Classical routing

• IP Address Assignment

- Static IP address assignment
- Internal DHCP server of LAN
- DHCP client on WAN
- PPoE client support

• Throughput

- LAN-to-WAN: 60 Mbps
- Connections: 20,000 concurrent sessions
- VPN throughput: 20 Mbps

• HW Specifications

- Dimensions: 252.7 x 179.5 x 35.1 mm (9.95 x 7.07 x 1.38 in)
- Weight: 1.34 kg (2.95 lb)
- Processor speed: 300 MHz
- Memory: 64 MB RAM, 16 MB flash
- Power supply: Output 12V/18W

• Environmental Specifications

- Operating temperature: 0° - 40° C (32° - 104° F)
- Operating humidity: 90% maximum relative humidity

• Physical Interfaces

- 1 Gigabit Ethernet RJ45 WAN
- 4 Gigabit Ethernet RJ45 LAN

Management Features

• Administration Interface

- SNMP (v2c) support
- Web graphic user interface
- Secure Sockets Layer (SSL) remote management
- User name and password protected
- Secure remote management support authenticated through IP address (or IP address range) and password
- Configuration changes/upgrades through Web GUI

• Logging

- SYSLOG
- Email alerts

• Functions

- VPN Wizard to simplify configuration of IPsec VPNs
- Auto Detect to automatically detect ISP address type (static, dynamic, PPPoE)
- Port range forwarding
- Port triggering
- Enable/disable WAN ping
- DNS proxy
- MAC address cloning/spoofing
- Network Time Protocol NTP support
- Diagnostic tools (ping, DNS lookup, trace route, other)
- Port/service
- Auto-Uplink on switch ports
- L3 Quality of Service (QoS)
- LAN-to-WAN and WAN-to-LAN (ToS)

• Package Contents

- ProSafe Wireless-N VPN Firewall (SRXN3205)
- Two (2) 5 dBi antennas and one (1) 3 dBi antenna
- Ethernet cable
- Power adapter
- User guide
- Resource CD with single-user ProSafe VPN Client Software license
- Warranty/support information card

NETGEAR Related Products**• Software**

- VPN01L and VPN05L ProSafe VPN Client Software

• Adapters

- RangeMax™ Wireless Notebook Adapter (WN511B)
- RangeMax™ Wireless USB 2.0 Adapter (WN111)
- RangeMax™ Dual Band Wireless USB 2.0 Adapter (WNTA3100)

Ordering Information

- North America: SRXN3205-100NAS
- Asia: SRXN3205-100AUS
- Europe: SRXN3205-100EUS

ProSupport Service Packs Available**• OnCall 24x7, Category 1**

- PMB0331-100 (US)
- PMB0331 (non-US)

• XPressHW, Category 1

- PRR0331

NETGEAR®

350 E. Plumeria Drive
San Jose, CA 95134-1911 USA
1-888-NETGEAR (638-4327)
E-mail: info@NETGEAR.com
www.NETGEAR.com

©2008 NETGEAR, Inc. NETGEAR, the NETGEAR Logo, NETGEAR Digital Entertainer Logo, Connect with Innovation, FrontView, IntelliFi, PowerShift, ProSafe, RAIDar, RAIDiator, X-RAID, RangeMax, ReadyNAS and Smart Wizard are trademarks of NETGEAR, Inc. in the United States and/or other countries. Other brand names mentioned herein are for identification purposes only and may be trademarks of their respective holder(s). Information is subject to change without notice. All rights reserved.

*Free basic installation support provided for 90 days from date of purchase. Advanced product features and configurations are not included in free basic installation support; optional premium support available.

†Lifetime warranty for product purchased after 05/01/2007.